

Narragansett Bay RIVERKEEPER®



WATERKEEPER ALLIANCE
MEMBER

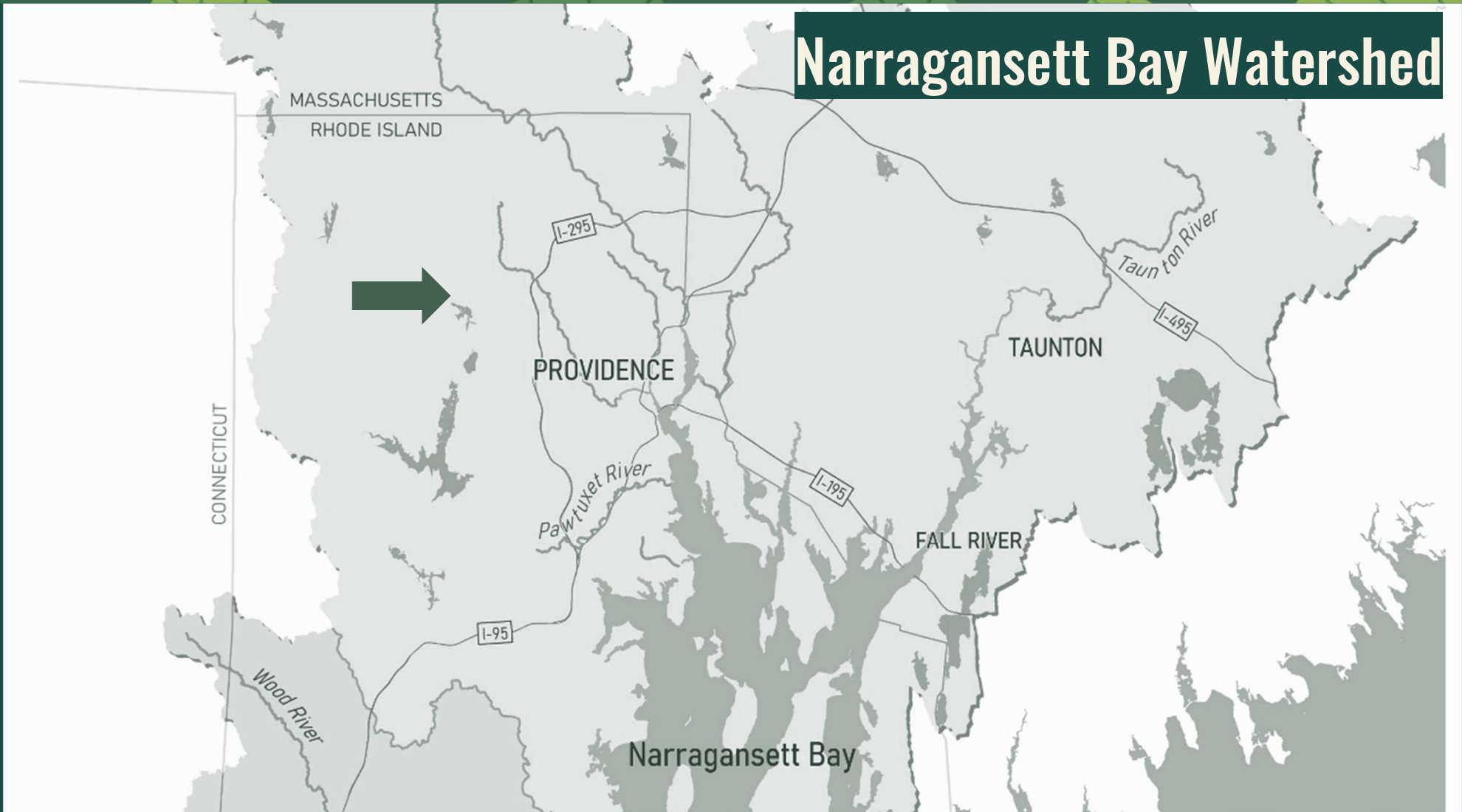
SAVE THE BAY®

NARRAGANSETT BAY

Lazy landscaping

how this homeowner put off yard work long enough to support a robust and growing bloodroot population

Narragansett Bay Watershed





2008

Best laid plans take time

April 2008

Bought a home on about 3 acres in Gloucester RI

Contacted a certified invasive species removal company and did a foliar application of herbicide

Oct 2015

Mar 2016

Piled up dead plant matter and burned.

Contacted David Greg @ RINHS to get my bloodroot population on the rare species map.

April 2020

May 2022

Started working with RI Wild Plant society-donating plants for sale.

March 2016



March 2016



March 2016



April 2020



WILDLIFE & NATURE

R.I. Needs to Stop Monitoring Demise of Rare Plants

New project designed to give disappearing native species a helping hand

By **Todd McLeish** / ecoRI News contributor

May 21, 2020

Share



Print this page

Only two populations of salt-marsh pink are left in Rhode Island, and they are at risk from sea-level rise. (Hope Leeson/RINHS)

David Gregg worries that not enough is being done to protect Rhode Island's rare plants.

"There are a lot of plant species that we're monitoring out of existence," said Gregg, the executive director of the [Rhode Island Natural History Survey](#). "We check them every year, and there are often fewer of them each year. The best-case scenario is that they stay the same, but many populations are getting smaller and smaller."

He believes that conservationists must be bolder during the climate crisis if native wild plants are going to survive in the coming decades. Rather than simply monitoring the status of rare plants in Rhode Island, he is advocating for the use of more active strategies to boost plant populations.

"There's been a big debate among biologists about how active we should be in trying to save rare species," Gregg said. "Are we going to end up gardening nature? Aren't we bound to make faulty decisions? If we get involved in active management of rare species, aren't we doomed to screw it up?"

With little left to lose in some cases, the Natural History Survey has chosen to partner with the Rhode Island Department of Environmental Management and the [Native Plant Trust](#) — formerly

EcoRI article inspired me!





Rhode Island Conservation Opportunities

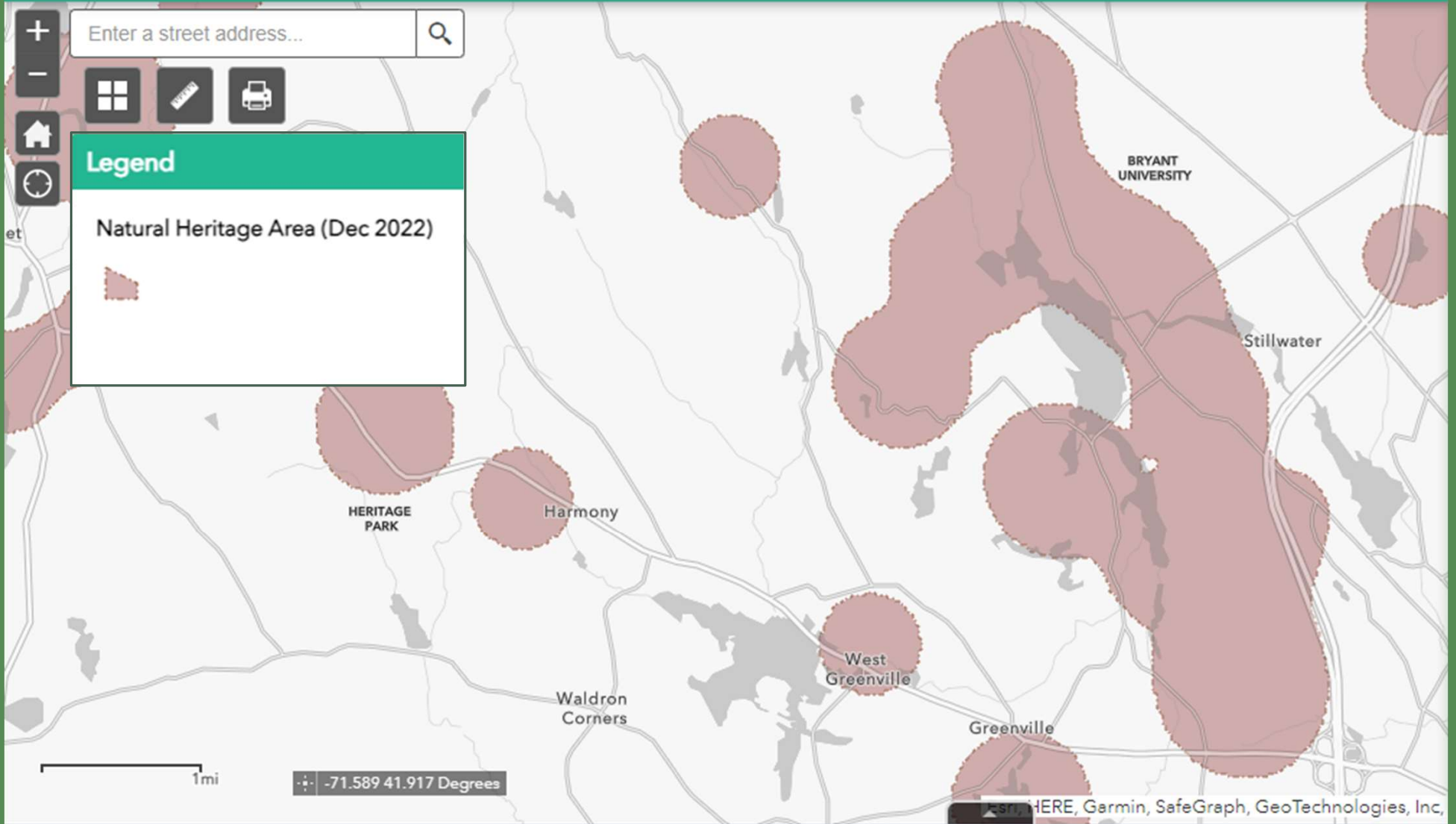
RI Wildlife Action Plan TNC Resilient & Connected Networks

Enter a street address...



Legend

Natural Heritage Area (Dec 2022)



Map data by HERE, Garmin, SafeGraph, GeoTechnologies, Inc.

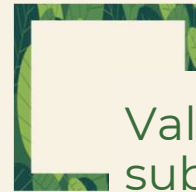
Status of Bloodroot (2020)



Species of Concern



Only 18 places in RI where it's been documented growing, and most of those sightings are historic (not confirmed within 30 years)



Valuable and subject to poaching- one of the most popular plants at RI Wild Plant Society sales





Dried Blood Root Bloodroot Powder (Sanguinaria Canadensis 2 oz)

5.0 ★★★★★ 1

Powder · Supplements · Adult

\$32.90

[Amazon.com - Seller](#)

Free delivery



Blood root

Vegan · Supplements · Adult

\$40.00

[Ancient Healing Root](#)

Delivery by Tue, Oct 10

Buy now



Bloodroot - Whole Dried Root, Appalachian Mountains Wild Harvest

Supplements · Adult

\$38.99

[eBay](#)

Free delivery by Tue, Oct 10

Buy now



Bloodroot (sanguinaria Canadensis) Tincture Herb Extract Double

Liquid

\$38.00

[eBay - redcardinalstore](#)

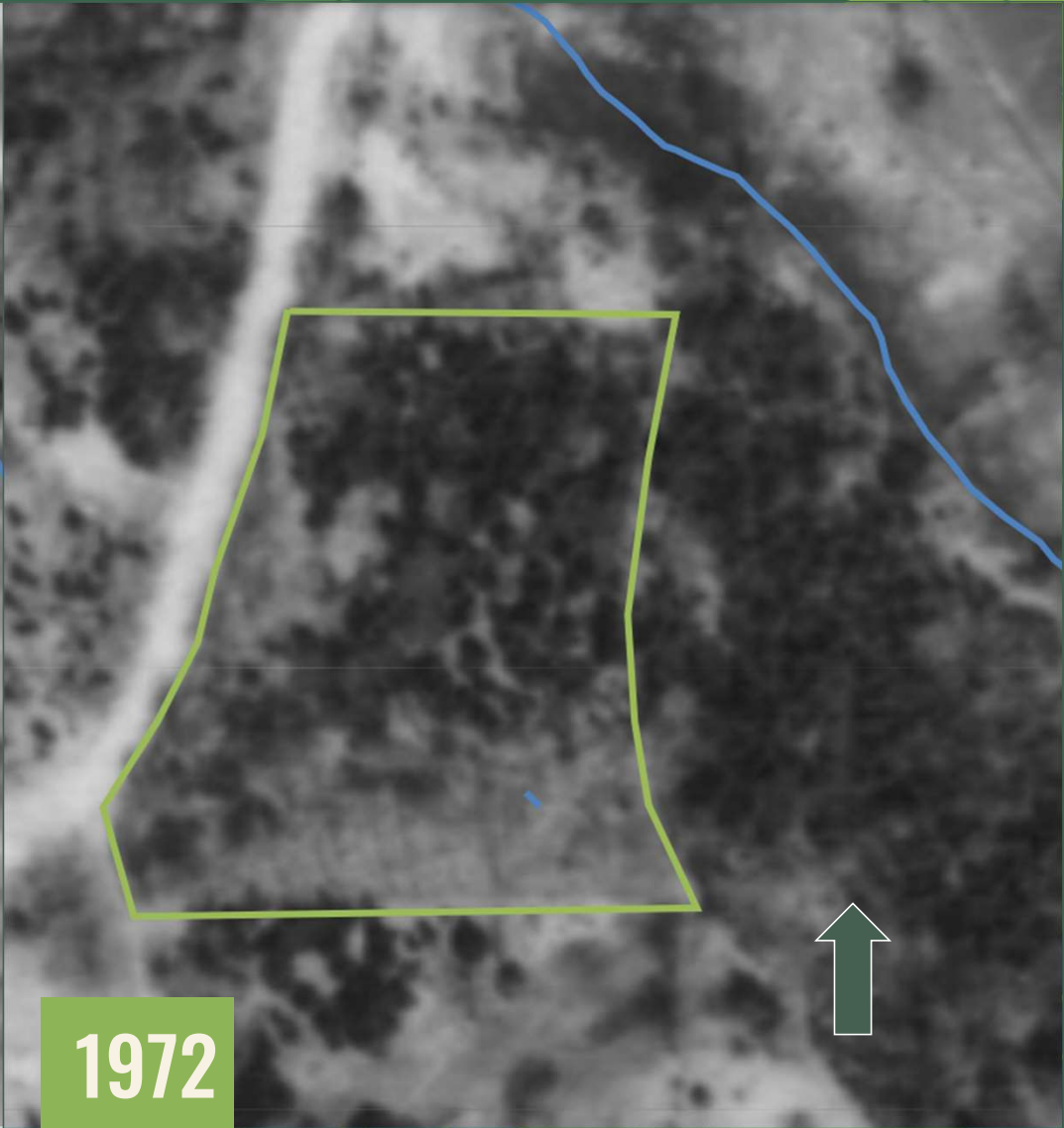
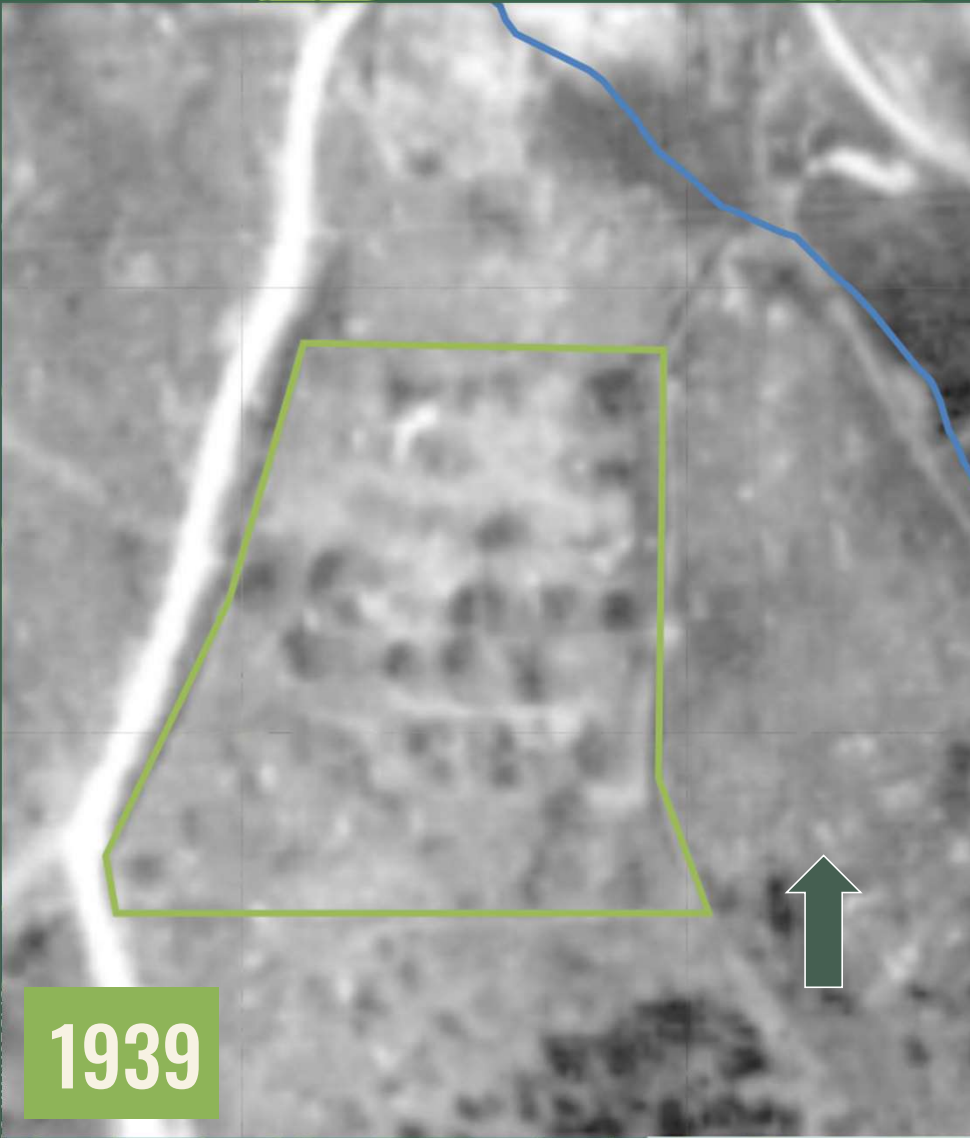
Delivery by Mon, Oct 9

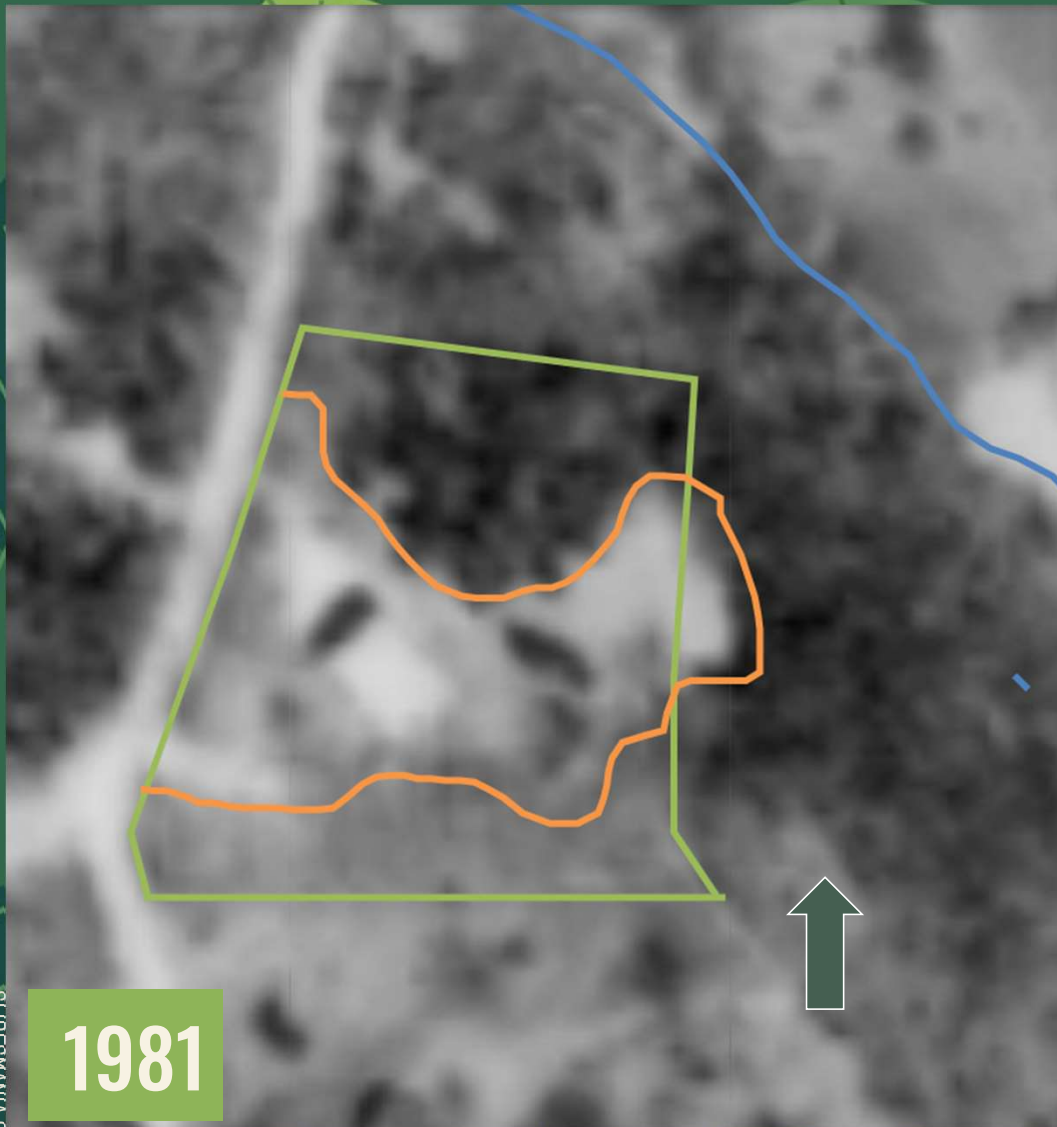
Buy now



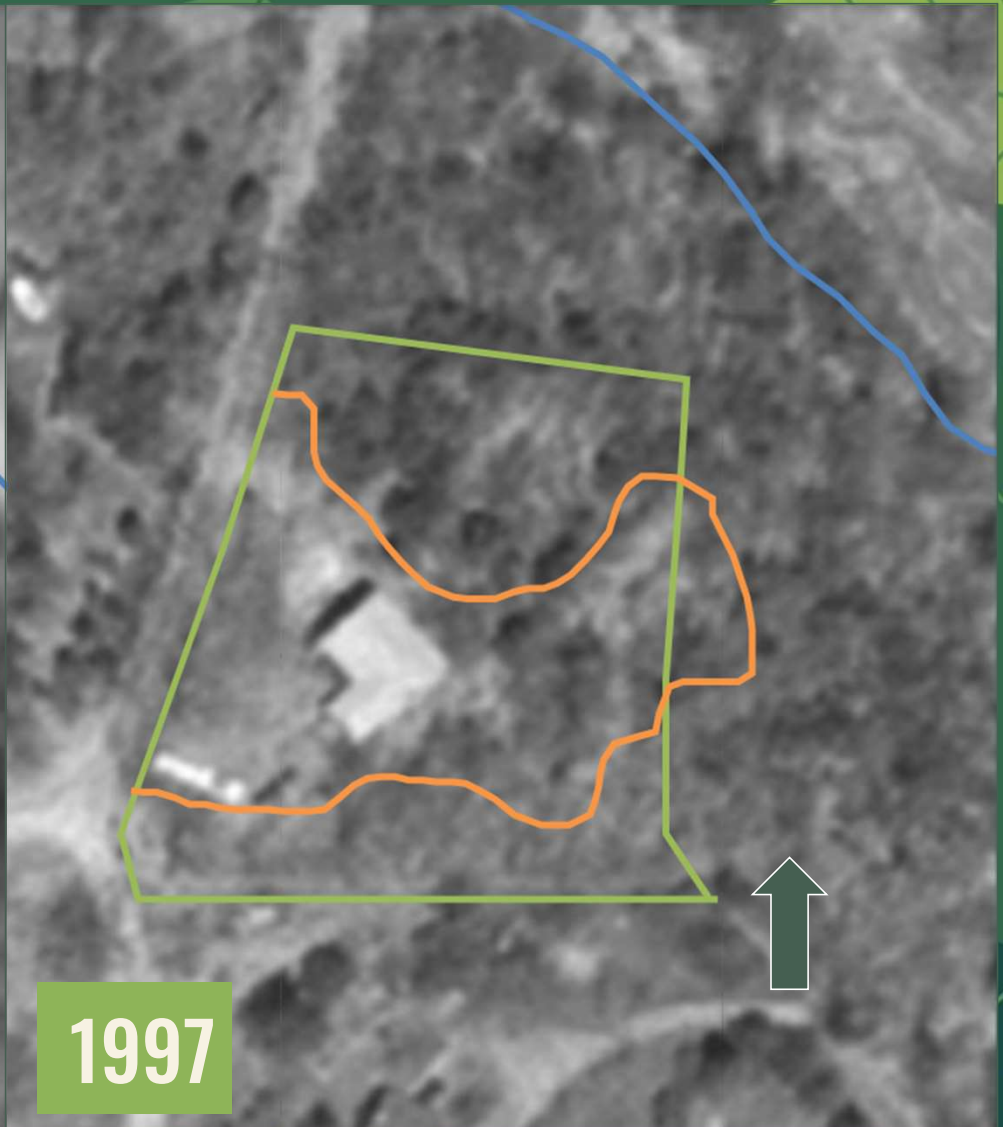
With the invasive shrubs gone, the bloodroot has room to bloom!

But where did the population come from?





1981

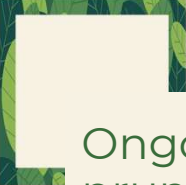


1997



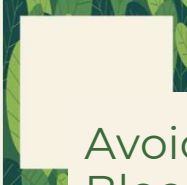
2008

So what are my practices for managing for Bloodroot?

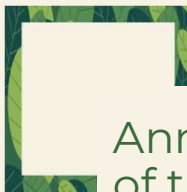


Ongoing hand-pruning invasive species in the understory and within the restoration area:

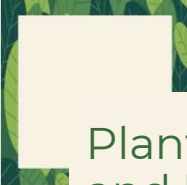
- 
- Bittersweet
 - Multiflora rose
 - Honeysuckle
 - Burning Bush
 - Norway Maple
 - Tree of Heaven



Avoiding Pesticides. Bloodroot seeds are gathered by ants. They eat a tasty coating and plant the seeds in the ground.



Annual weed-wack of the cleared area to limit raspberry, blackberry, and wild grape growth



Planting Native Trees and helping natural-start saplings to shade out full sun invasives.



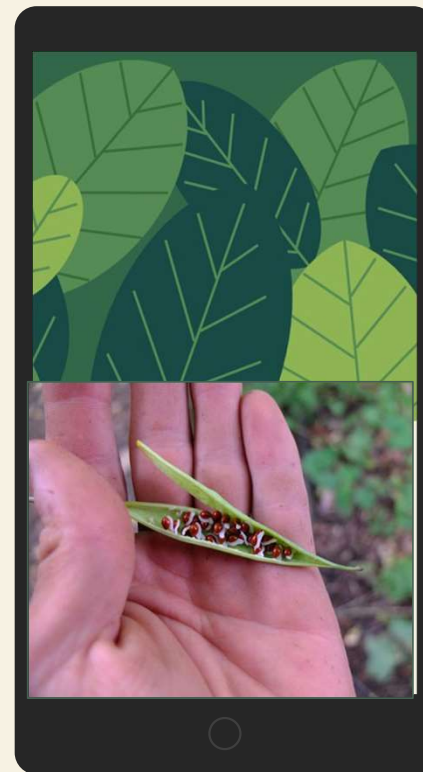
I Avoid walking on bloodroot or pulling invasives in the patch from April to August

Identifying Plants is easier than ever

I use Google Lens to get me close and
then a good old fashioned wildflower
field guide.

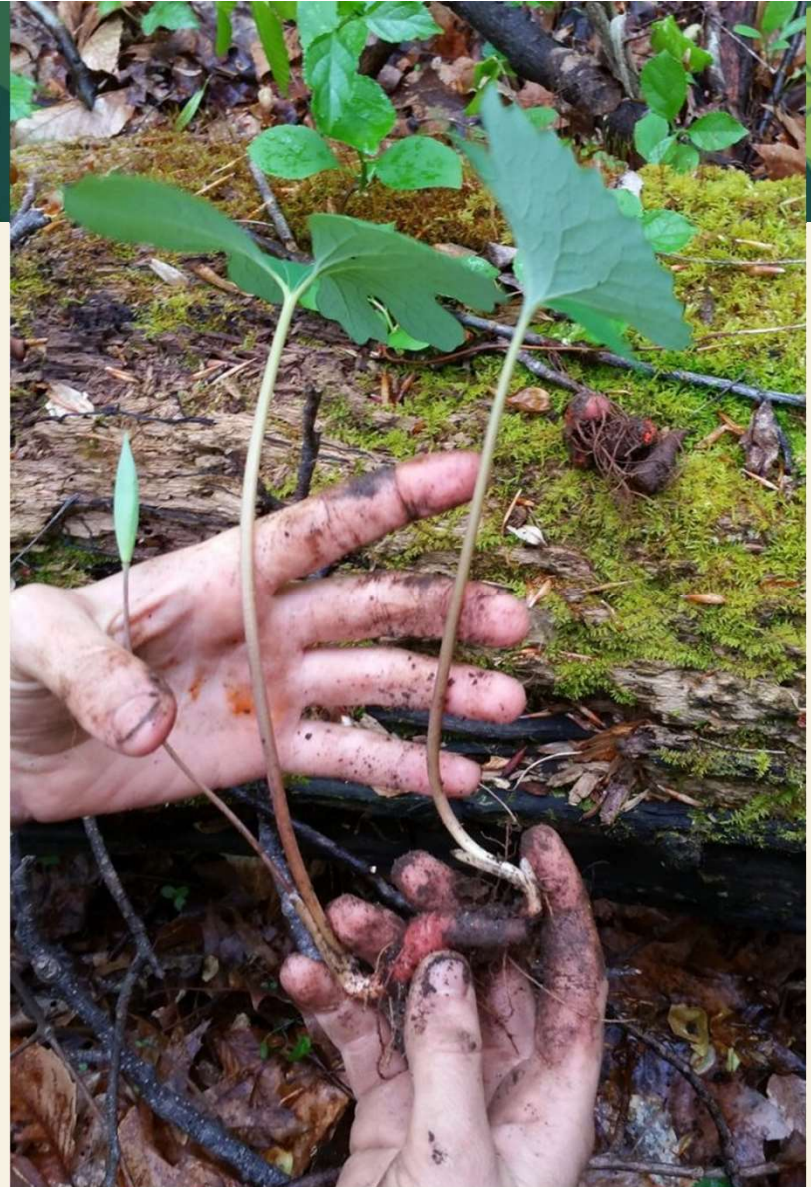
There are lots of Plant ID apps
available.

Updated 2016 List of Rare Plants
available on RINHS.ORG



Helping to spread my patch

- Plant donations: You can buy my bloodroot at the RI Wild Plant Society spring sale.
- Collecting seeds: for RI Wild Plant Society and Narragansett Tribe's Environmental Protection and Natural Resources Management Program
- Stepping lightly so that the thousands of plants that grace my back "yard" continue to thrive



THANK YOU

KMCPHERSON@SAVEBAY.ORG

Follow me @ NBRiverkeeper

SAVE THE BAY®

NARRAGANSETT BAY

Narragansett Bay RIVERKEEPER®



WATERKEEPER® ALLIANCE
MEMBER