



Ayla Fox for NBEP

# NBEP EXECUTIVE COMMITTEE MEETING

May 14, 2024  
1-2:30 PM  
Zoom

# AGENDA

Subject	Presenter(s)	Shared via Zoom	Formal Committee Action Requested Today	Start Time
Meeting Open, Announcements	Caitlin Chaffee, Chair	Agenda	Approve February 13, 2024 Executive Committee notes.	1:00
RWU Representative to NBEP Executive Committee	Caitlin Chaffee, Chair	PPT	Approve Peter Wong as the new RWU representative to the NBEP Executive Committee.	1:05
NBEP Quarterly Financial Report	Darcy Young, NBEP	PPT	None.	1:05
NBEP 320/SNEP FY2024 Workplan and Budget	Darcy Young, NBEP	PPT	None.	1:15
NBEP BIL FY2024 Workplan and Budget	Darcy Young, NBEP	PPT	None.	1:45
NBEP Updates	Darcy Young, NBEP	PPT	None.	2:15
Committee Member Updates	Executive Committee	None.	None.	2:20
Adjourn Meeting	Caitlin Chaffee, Chair	None.	Adjourn meeting.	2:30

# FEBRUARY 13, 2024 EC MEETING NOTES

## Decision

Does the Executive Committee vote to approve the draft notes from the February 13, 2024 Executive Committee meeting?

# RWU REPRESENTATIVE TO EC

## Decision

Does the Executive Committee vote to approve Peter Wong as the RWU representative to the NBEP Executive Committee?





Ayla Fox for NBEP

# NBEP QUARTERLY FINANCIAL REPORT



# NBEP FINANCIALS AS OF 3/31/24

## NBEP Financials as of March 31, 2024

Category	Section 320 & SNEP Funds - FY2021 and FY2022 <sup>(1)</sup>				Section 320 & SNEP Funds - FY2023				BIL <sup>(2)</sup>				Program Income		Total Available				Notes
	Budget	Total Spent	Total Encumbered <sup>(3)</sup>	Total Available To Spend	Budget	Total Spent	Total Encumbered <sup>(3)</sup>	Total Available To Spend	Budget	Total Spent	Total Encumbered <sup>(3)</sup>	Total Available To Spend	Awarded	Spent	Budget	Total Spent	Total Encumbered <sup>(3)</sup>	Total Available to Spend	
Salary	\$860,038	\$735,867	\$735,867	\$124,171	\$463,257	\$0	\$0	\$463,257	\$0	\$0	\$0	\$0			\$1,323,295	\$735,867	\$735,867	\$587,428	FY23 budget is for 5 FTEs (Outreach Manager and Ecologist hires) and RWU interns
Fringe	\$278,259	\$167,948	\$152,039	\$126,220	\$169,458	\$0	\$0	\$169,458	\$0	\$0	\$0	\$0			\$447,717	\$167,948	\$152,039	\$295,678	
Travel	\$13,175	\$12,525	\$12,525	\$650	\$9,250	\$0	\$0	\$9,250	\$0	\$0	\$0	\$0			\$22,425	\$12,525	\$12,525	\$9,900	
Office Supplies	\$7,254	\$17,056	\$15,487	-\$8,233	\$15,000	\$0	\$0	\$15,000	\$0	\$0	\$0	\$0	\$500	\$500	\$22,754	\$17,556	\$15,987	\$6,767	
Contracts	\$116,200	\$44,859	\$116,159	\$41	\$45,734	\$4,725	\$4,725	\$41,009	\$0	\$0	\$0	\$0			\$161,934	\$49,584	\$116,159	\$41,050	CCMP, non-RWU interns, community engagement, ANEP
Subawards	\$1,309,942	\$482,191	\$1,306,318	\$3,624	\$232,573	\$0	\$185,000	\$47,573	\$1,819,600	\$554,510	\$1,819,599	\$1			\$3,362,115	\$1,036,701	\$3,310,917	\$51,198	remaining amount for 2024 outreach awards
Meals	\$8,160	\$13,787	\$13,787	-\$5,627	\$8,100	\$0	\$0	\$8,100	\$0	\$0	\$0	\$0			\$16,260	\$13,787	\$13,787	\$2,473	
Event Hosting	\$2,400	\$4,412	\$4,412	-\$2,012	\$1,500	\$0	\$0	\$1,500	\$0	\$0	\$0	\$0	\$1,600	\$1,600	\$5,500	\$6,012	\$6,012	-\$512	
Prof Development	\$4,515	\$447	\$447	\$4,068	\$0	\$0	\$0	\$0	\$0	\$0	\$0	\$0			\$4,515	\$447	\$447	\$4,068	
Phone	\$11,128	\$12,346	\$12,346	-\$1,218	\$4,776	\$0	\$0	\$4,776	\$0	\$0	\$0	\$0			\$15,904	\$12,346	\$12,346	\$3,558	
Printing	\$5,479	\$598	\$598	\$4,881	\$11,622	\$0	\$0	\$11,622	\$0	\$0	\$0	\$0			\$17,101	\$598	\$598	\$16,503	Vision 2034 printing
Advertising	\$200	\$0	\$0	\$200	\$300	\$0	\$0	\$300	\$0	\$0	\$0	\$0			\$500	\$0	\$0	\$500	
Registration Fees	\$1,250	\$3,022	\$3,197	-\$1,947	\$2,500	\$0	\$0	\$2,500	\$0	\$0	\$0	\$0	\$900	\$900	\$4,650	\$3,922	\$4,097	\$553	
<b>Total Direct</b>	<b>\$2,618,000</b>	<b>\$1,495,058</b>	<b>\$2,373,182</b>	<b>\$244,818</b>	<b>\$964,070</b>	<b>\$4,725</b>	<b>\$189,725</b>	<b>\$774,345</b>	<b>\$1,819,600</b>	<b>\$554,510</b>	<b>\$1,819,599</b>	<b>\$1</b>	<b>\$3,000</b>	<b>\$3,000</b>	<b>\$5,404,670</b>	<b>\$2,057,293</b>	<b>\$4,380,781</b>	<b>\$1,019,164</b>	
<b>Indirect</b>	<b>\$169,151</b>	<b>\$131,884</b>	<b>\$131,884</b>	<b>\$37,267</b>	<b>\$135,930</b>	<b>\$0</b>	<b>\$0</b>	<b>\$135,930</b>	<b>\$0</b>	<b>\$0</b>	<b>\$0</b>	<b>\$0</b>			<b>\$305,081</b>	<b>\$131,884</b>	<b>\$131,884</b>	<b>\$173,197</b>	
<b>Total</b>	<b>\$2,787,151</b>	<b>\$1,626,942</b>	<b>\$2,505,066</b>	<b>\$282,085</b>	<b>\$1,100,000</b>	<b>\$4,725</b>	<b>\$189,725</b>	<b>\$910,275</b>	<b>\$1,819,600</b>	<b>\$554,510</b>	<b>\$1,819,599</b>	<b>\$1</b>	<b>\$3,000</b>	<b>\$3,000</b>	<b>\$5,709,751</b>	<b>\$2,189,177</b>	<b>\$4,512,665</b>	<b>\$1,192,361</b>	

(1) Includes all Section 320 and SNEP monies awarded to RWU/NBEP for EPA years FY2021 and FY2022 (end date 9/30/2025).

(2) Includes all BIL monies awarded to RWU/NBEP for EPA years FY2022 and FY2023 (end date 9/30/2027).

(3) Total Encumbered includes all funds that have been spent OR obligated to a specific external party via our workplan and/or formal agreement. These funds may not have been fully spent yet, but are not available for other purposes.







Ayla Fox for NBEP

# NBEP CWA 320 & SNEP WORKPLAN AND BUDGET

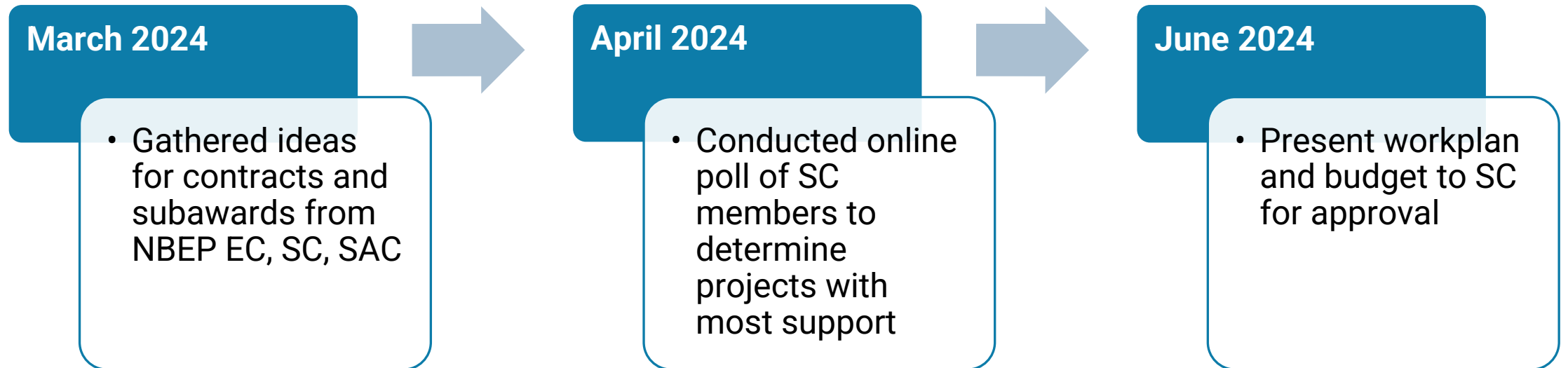


# CWA 320 & SNEP FY2024 WORKPLAN AND BUDGET

\$1.1M budget (\$850K CWA + \$250K SNEP)

Submit SC-approved version to EPA R1 before July 4

Committee input and approval process:





# CWA 320 & SNEP FY2024 WORKPLAN AND BUDGET

Cooperative Agreement Year	Funds expire	Internal costs
FY21 & FY22	9/30/2025	Bill 4 FTE until approx. September 2024
FY23	9/30/2026*	One year, 5 FTEs, starting approx. October 2024
FY24	9/30/2026*	3 FTEs @ 12 months, 2 FTEs @ 67%, starting approx. October 2025

\*NBEP/RWU may request amendments to extend term up to 9/30/2030.

Underbudgeted staff time for FY24 due to unspent personnel funds available in FY23 budget

# CWA 320 & SNEP FY2024 WORKPLAN AND BUDGET

Funds available for contracts and subawards: **\$412,850**

## **FY24 contracts: \$112,000**

- \$45,000 to complete writing for NBEP CCMP
- \$67,000 to begin data analysis for 2027 Status & Trends / State of the Bay publication (likely beginning with water quality indicators)

# CWA 320 & SNEP FY2024 WORKPLAN AND BUDGET

Funds available for contracts and subawards: **\$412,850**

## **FY24 subawards: \$300,850**

- \$75,850 for NBEP Outreach & Education RFP
- \$75,000 for Research Plan RFP
- \$75,000 for RIDEM Watershed Connectivity Project Manager (coordinate Lower Blackstone and other connectivity projects)
- \$75,000 for RI Stormwater Design Manual Revision



# CWA 320 & SNEP FY2024 WORKPLAN AND BUDGET

We need match! NBEP is required to provide 1:1 non-federal match for this \$1.1M award.

If you can provide **non-federal match** for the period of this award (October 1, 2024 – September 30, 2025), please complete the form Darcy emailed on May 9 and return to NBEP by Friday, May 31. Any projects consistent with NBEP's CCMP are eligible.

The Steering Committee will consider NBEP's FY2024 workplan package (*including match*) for approval at their next meeting on June 13.



Ayla Fox for NBEP

QUESTIONS, FEEDBACK? |





Ayla Fox for NBEP

# NBEP BIL FY2024 WORKPLAN AND BUDGET



# NBEP BIL LONG-TERM WORKPLAN

## Year 1

- Capacity-building awards: some complete; some ongoing through September 2025.
- Planning projects are seeking additional funds.

## Year 2

- Capacity-building projects underway.
- Habitat and access planning projects underway.

## Years 3-5

- BIL Long-Term Plan suggests splitting allocation between direct (\$459,800/yr) and competitive (\$450,000/yr) awards.
- We can modify this plan

# BIL YEARS 3 AND 4 (FY2024-FY2025) WORKPLAN

BIL Years 3 & 4: \$1,818,000 (\$909,800/yr)

- Year 3 funds ready at EPA R1
- NBEP plans to submit a two-year workplan to include Year 4

To follow BIL Long-Term Plan in Year 3, we would:

- Direct \$459,800 to specific awardees
- Use \$450,000 for RFP

# BIL YEAR 3 DIRECT AWARD PROPOSALS

## The Nature Conservancy in Rhode Island

**\$TBD**

Engineering, design, and permitting for 60% design of fish passage structure for the Elizabeth Webbing dam on the lower Blackstone River. Tasks to include analysis of partial or full dam removal and impacts on upstream wetlands.

## Wood-Pawcatuck Watershed Association

**\$213,000**

Engineering, design, and permitting of the Hillsdale Road Culvert on the Beaver River, a high-priority project identified in the draft W-P Cold Water Stream Restoration Plan funded by NBEP with Year 1 BIL direct award.



# BIL YEARS 3 & 4 WORKPLAN APPROVAL PROCESS

Interim TNC-RI & WPWA project reports to SC via email by end of May

SC to vote on BIL workplan and budget on June 13

Submit workplan for BIL Years 3 & 4 to EPA by end of June

# BIL YEARS 3 & 4 WORKPLAN APPROVAL PROCESS

NBEP seeks feedback on:

1. Proposed direct awards and process for approval
2. Year 3 RFP topics (can be decided at a later date)





Courtney Schmidt

# NBEP UPDATES



# COMMITTEE MEMBERSHIP APPOINTMENTS

## Executive Committee

- Peter Wong to replace Allen Hance as RWU representative

## Steering Committee

- Koty Sharp to replace Ben Greenstein as RWU representative
- Ben Greenstein interested in independent appointment to SC after retirement from RWU
- Sam Haines, Massachusetts Coastal Zone Management (CZM)



Consider appointment of RWU reps only in June, or full suite?



# WATERSHED OUTREACH MANAGER HIRE

Position posted 4/23/24 and is open until filled. 28 applications received as of 5/14/24.

Plan to review applications beginning in late May and start interviews in June.

Hiring committee: NBEP, Blackstone Watershed Collaborative, No Fluke Fishing, RWU, EPA R1

# WATERSHED OUTREACH & EDUCATION RFP

RFP closed on May 3

18 applications received totaling \$202,325

Approx. \$50,000 available to award

Grants review committee will meet May 29 to advise funding decisions

# CCMP WRITING UPDATE

## Timeline

- Five firms/individuals contacted, three quotes obtained for CCMP writing
- Contract (\$60,000) executed with Shafer Consulting, LLC
- Will present first full draft to SC for September 2024 meeting prior to public comment period October – December 2024

## In the meantime...

- Geographic meetings: Blackstone Watershed Collaborative 4/19, Taunton Wild & Scenic Stewardship Council 7/11, others TBD
- Late spring / early summer: NBEP to contact implementing partners listed on Actions with requests for feedback on drafts

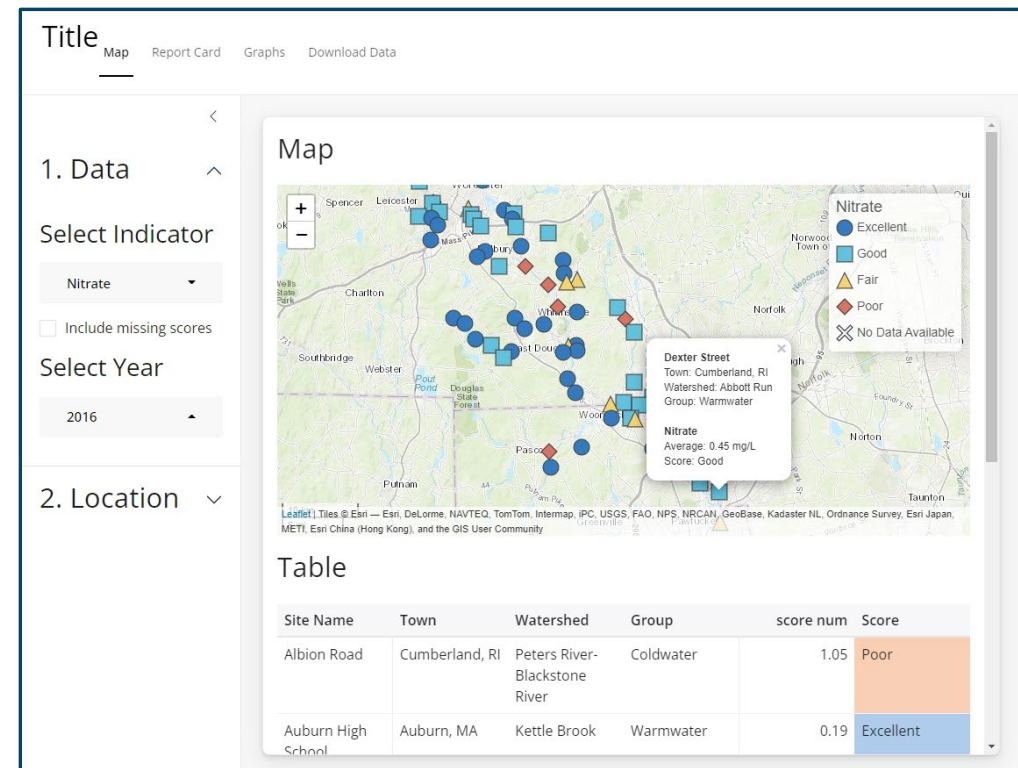
# WQDASHBOARD & MASSWATER

## WQdashboard

- Customizable water quality dashboard that can be used by local groups
- Expect to finish June 2024

## MassWaterR

- Water quality QAQC tool developed by MassBays NEP and Tampa Bay Estuary Program
- Casco Bay, MassBays, NBEP, and PREP are collaborating on an EPA Network Exchange grant to expand MassWaterR
- Funding is for 2024-2027



Wqdashboard progress



# NASA-ROSES: SUPPORTING CLIMATE RESILIENT COMMUNITIES

**Title:** Expanding shoreline social infrastructure to build coastal community resilience in Southern New England through remote sensing and community-informed science

**Goal:** Integrate remotely-sensed and geospatial data with community-derived data to co-produce solutions that protect and enhance shoreline social infrastructure to strengthen community resilience to climate change

**Partners:** URI, Stony Brook U., USF, NBEP

**NBEP's role:** coordinate and convene meetings with partner organizations and develop relationships with identified communities to recruit for focus groups; publish work products on our GIS Hub

# NBEP PUBLIC ACCESS DATABASE & SUMMER INTERN

**Project:** Develop a database of public access site locations (saltwater, freshwater, uplands) in the NBEP study area for use by partner organizations.

**Intern:** NBEP hired Delaney Borello, URI undergraduate student, through the Rhode Island Sea Grant Community Engaged Internship Program to work with Mariel and Courtney in summer 2024. Delaney will reach out to partners for data.





Ayla Fox for NBEP

# FEEDBACK, QUESTIONS?





# EC MEMBER UPDATES







# THANK YOU!

Reminder: The NBEP Steering Committee will meet on Thursday, June 13 at 10am, Barrington Public Library or Zoom.